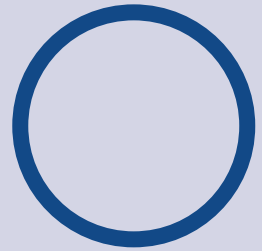


# UGELLI A CONO VUOTO HOLLOW CONE NOZZLES BUSES À CÔNE CREUX HOHLKEGELDÜSEN BOQUILLAS DE CONO HUECO



Questo tipo di spruzzo viene ottenuto grazie ad un ingresso tangenziale del liquido nella camera di turbolenza. All'uscita dell'orificio dell'ugello si ottiene quindi uno spruzzo a cono vuoto finemente nebulizzato e distribuito uniformemente. Assenza di vorticatori interni e quindi minori problemi di intasamento.

Materiali: ottone e acciaio inox AISI 303;  
Su richiesta AISI 316 - PVC - altri.

Filettature maschio gas conico (BSPT).

This spray pattern is obtained using a liquid inlet tangential to the whirl chamber. Out of nozzle orifice, you have a hollow cone with fine atomization and uniform distribution. Reduced clogging problems with no internal vanes.

Materials: brass and stainless steel AISI 303.

On request AISI 316 - PVC - others.

Thread connections (BSPT).

Ce type de pulvérisation est obtenu grâce à une entrée tangentielle du liquide dans la chambre de turbulence, à la sortie de l'orifice de la buse l'on obtient ainsi une pulvérisation à cône creux finement nébulisée et distribuée uniformément. L'absence de divergent limite les problèmes de bouchage.

Matériaux: laiton, acier inox 303 sur demande acier inox 316, PVC, autres.

Filetage: pas du gaz (BSPT).

Bei diesem Dosentyp wird die gleichmäßige Strahlform und der geringe Tropfendurchmesser durch tangentialen Eintritt der Strömung in die Wirbelkammer erreicht. Der Strahlaustritt ist achsenparallel zur Wirbelachse. Durch das Fehlen innerer Wirbelbleche werden Verstopfungsprobleme vermieden.

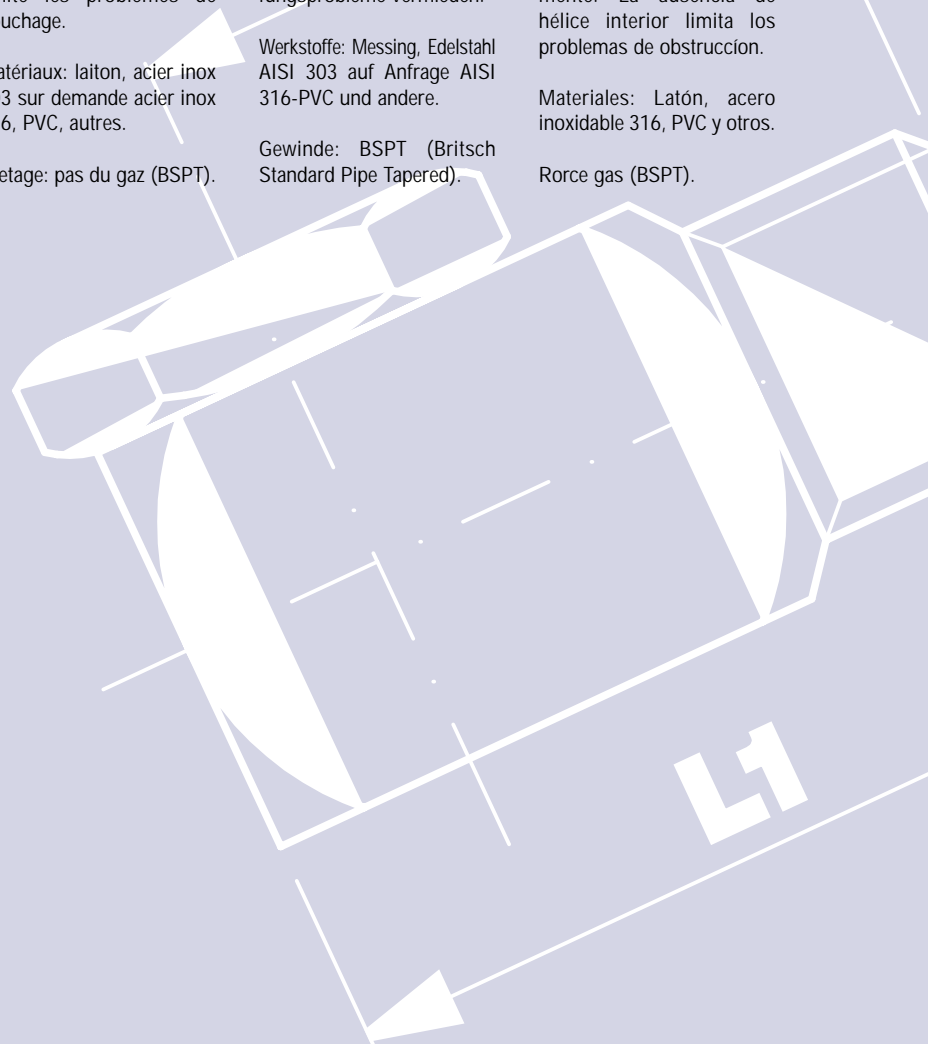
Werkstoffe: Messing, Edelstahl AISI 303 auf Anfrage AISI 316-PVC und andere.

Gewinde: BSPT (Britisch Standard Pipe Tapered).

Este tipo de pulverización se obtiene gracias a una entrada tangencial del líquido en la cámara de turbulencia. A la salida del orificio de la boquilla se obtiene de este modo una pulverización de cono hueco, finamente nebulizada y distribuida uniformemente. La ausencia de hélice interior limita los problemas de obstrucción.

Materiales: Latón, acero inoxidable 316, PVC y otros.

Rorces gas (BSPT).



## LEGENDA

$D$  =  $\emptyset$  orificio mm.  
 $D_1$  =  $\emptyset$  foro ingresso nel corpo.  
 $\sphericalangle^{\circ}$  = angolo di spruzzo alle varie pressioni.

## KEY

$D$  =  $\emptyset$  orifice mm.  
 $D_1$  =  $\emptyset$  body inlet hole.  
 $\sphericalangle^{\circ}$  = spray angle at various pressures.

## LEGENDE

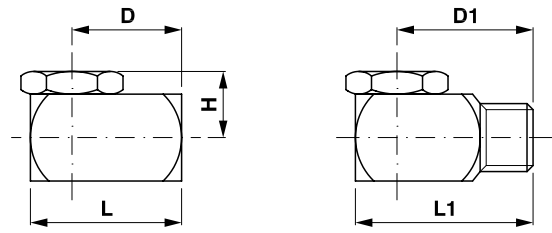
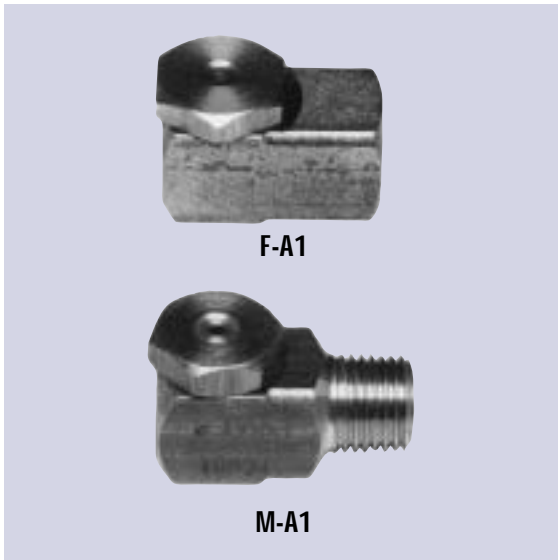
$D$  =  $\emptyset$  orifice mm.  
 $D_1$  =  $\emptyset$  orifice d'alimentation dans le corps.  
 $\sphericalangle^{\circ}$  = angle de dispersion à différentes pressions.

## ZEICHENERKLÄRUNG

$D$  =  $\emptyset$  Düsenöffnung mm.  
 $D_1$  =  $\emptyset$  Eingangsbohrung.  
 $\sphericalangle^{\circ}$  = Spritzwinkel bei verschiedenen Drücken.

## LEYENDA

$D$  = Diámetro del orificio (mm).  
 $D_1$  = Diámetro de entrada al cuerpo (mm).  
 $\sphericalangle^{\circ}$  = Angulo de aspersión a distintas presiones.



	Dimensioni mm	Dimensions mm	Dimensions mm	Abmessungen mm	Dimensiones mm
Ø	D	L	D1	L1	H
1/8	16	22	22	28.5	9.5
1/4	20.5	28.5	25.5	33.5	12.5
3/8	24	34	28.5	38	14.5
1/2	33.5	46	35	47.5	19
3/4	39.5	55.5	41	57	22
3/8 30.1	24	34	28.5	38	19
3/8 50.1	24	34	28.5	38	21.4

### CARATTERISTICHE

- Testina rimovibile.
- Spruzzo a 90° rispetto l'asse d'ingresso.

### CHARACTERISTICS

- Removable cap.
- 90° spray from the inlet axis.

### CARACTERISTIQUES

- Tête interchangeable
- Puivérisation à 90° par rapport à l'axe d'entrée du liquide.

### TECHNISCHE EIGENSCHAFTEN

- Düse auswechselbar 90° abgewinkelt.

### CARACTERISTICAS

- Cabeza intercambiable.
- Pulverización a 90° en relación al eje de entrada del líquido.

### APPLICAZIONI

- Lavaggio e raffreddamento aria e gas.
- Abbattimento polveri.
- Trattamenti superficiali.
- Umidificazioni.
- Processi chimici.

### APPLICATIONS

- Washing and cooling of air and gas.
- Dust control.
- Surface treatments.
- Humidifications.
- Chemical processing.

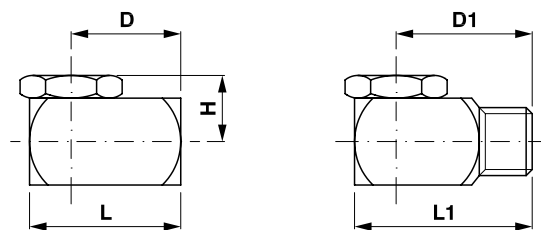
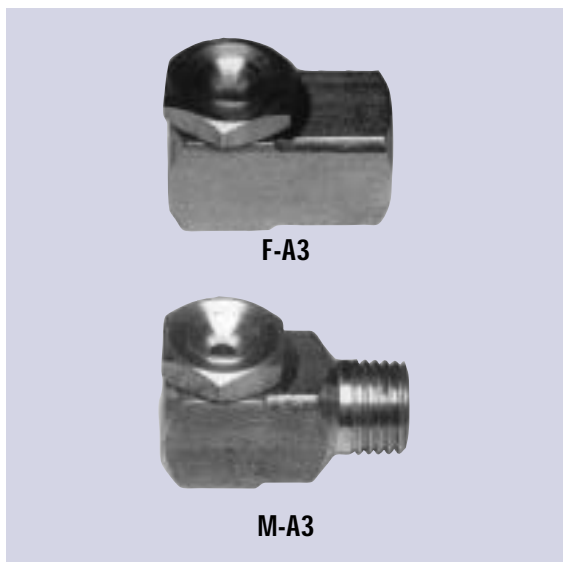
### ANWENDUNGEN

- Waschen und Kühlen von Luft und Gas.
- Staubkontrolle (Staubbefeuchtung).
- Oberflächenbehandlung.
- Befeuchtung chemische Verfahrenstechnik.

### APLICACIONES

- Lavado y enfriamiento de aire y gas.
- Control de polvo.
- Tratamiento de superficies.
- Humidificación.
- Tratamientos químicos.

TIPO UGELLO NOZZLE TYPE TYPE DE BUSE DÜSENTYP TIPO DE BOQUILLA	D <sub>1</sub> Ø mm	D Ø mm	Pressione - Pressure - Pression - Druck - Presión (bar)										bar		
			0.75	1	1.5	2	3	4	5	6	7	0.5	1.5	5	
			Portata - Capacity - Debit - Volumenstrom - Caudal (l/min)										∠°	∠°	∠°
1/8 F - A1 - 0.5	1/8 M - A1 - 0.5	0.9	1.1	0.19	0.22	0.27	0.32	0.36	0.39	0.45	0.51	0.55	35	60	70
1/8 F - A1 - 1	1/8 M - A1 - 1	1.4	1.4	0.39	0.45	0.55	0.63	0.71	0.78	0.90	1.01	1.10	38	65	75
1/8 F - A1 - 2	1/8 M - A1 - 2	2.1	2.0	0.78	0.90	1.11	1.28	1.43	1.56	1.81	2.02	2.22	53	60	70
1/8 F - A1 - 3	1/8 M - A1 - 3	2.4	2.4	1.17	1.35	1.65	1.92	2.14	2.35	2.71	3.03	3.32	52	65	76
1/8 F - A1 - 5	1/8 M - A1 - 5	3.0	3.3	1.96	2.28	2.76	3.22	3.60	3.95	4.56	5.10	5.58	54	68	75
1/8 F - A1 - 8	1/8 M - A1 - 8	3.8	3.9	3.12	3.61	4.42	5.10	5.70	6.25	7.22	8.06	8.84	55	64	71
1/8 F - A1 - 10	1/8 M - A1 - 10	4.4	4.4	3.90	4.51	5.52	6.37	7.13	7.80	9.02	10.1	11.0	58	64	72
1/4 F - A1 - 1	1/4 M - A1 - 1	1.4	1.4	0.39	0.45	0.55	0.63	0.71	0.78	0.90	1.01	1.10		54	68
1/4 F - A1 - 2	1/4 M - A1 - 2	2.1	2.2	0.78	0.90	1.11	1.28	1.43	1.56	1.81	2.02	2.22	47	61	70
1/4 F - A1 - 3	1/4 M - A1 - 3	2.4	2.4	1.17	1.35	1.65	1.92	2.14	2.35	2.71	3.03	3.32	50	64	76
1/4 F - A1 - 5	1/4 M - A1 - 5	3.6	3.7	1.96	2.28	2.76	3.22	3.60	3.95	4.56	5.10	5.58	64	74	80
1/4 F - A1 - 8	1/4 M - A1 - 8	4.1	4.0	3.12	3.61	4.42	5.10	5.70	6.25	7.22	8.06	8.84	60	70	72
1/4 F - A1 - 10	1/4 M - A1 - 10	4.7	4.5	3.90	4.51	5.52	6.37	7.13	7.80	9.02	10.1	11.0	64	70	75
1/4 F - A1 - 15	1/4 M - A1 - 15	5.8	5.1	5.87	6.78	8.30	9.60	10.7	11.7	13.5	15.1	16.6	64	70	73
3/8 F - A1 - 5	3/8 M - A1 - 5	3.5	3.3	1.96	2.28	2.76	3.22	3.60	3.95	4.56	5.10	5.58	65	72	80
3/8 F - A1 - 8	3/8 M - A1 - 8	4.5	4.2	3.12	3.61	4.42	5.10	5.70	6.25	7.22	8.06	8.84	63	71	75
3/8 F - A1 - 10	3/8 M - A1 - 10	5.0	4.5	3.90	4.51	5.52	6.37	7.13	7.80	9.02	10.1	11.0	63	73	76
3/8 F - A1 - 15	3/8 M - A1 - 15	6.1	5.4	5.87	6.78	8.30	9.60	10.7	11.7	13.5	15.1	16.6	65	73	75
3/8 F - A1 - 20	3/8 M - A1 - 20	7.1	6.4	7.85	9.05	11.1	12.8	14.3	15.6	18.1	20.2	22.2	64	71	75
3/8 F - A1 - 25	3/8 M - A1 - 25	7.4	7.4	9.86	11.4	13.9	16.1	18.0	19.7	22.8	25.5	28.0	64	71	75
3/8 F - A1 - 30	3/8 M - A1 - 30	8.3	7.9	11.7	13.5	16.5	19.2	21.4	23.5	27.1	30.3	33.2	64	70	75
3/8 F - A1 - 15 - 30.1	3/8 M - A1 - 15-30.1	6.1	7.9	9.05	10.4	12.8	14.8	16.5	18.1	20.9	23.4	25.6	41	51	55
3/8 F - A1 - 25 - 30.1	3/8 M - A1 - 25-30.1	7.4	7.9	10.9	12.8	15.4	17.8	19.9	21.8	25.1	28.2	30.8	40	48	50
3/8 F - A1 - 50 - 50.3	3/8 M - A1 - 50-50.3	8.7	9.5	19.6	22.8	27.6	32.2	36.0	39.5	45.6	51.0	55.8	73	75	78
1/2 F - A1 - 25	1/2 M - A1 - 25	9.5	6.4	9.86	11.4	13.9	16.1	18.0	19.7	22.8	25.5	28.0	62	65	70
1/2 F - A1 - 30	1/2 M - A1 - 30	9.5	7.5	11.7	13.5	16.5	19.2	21.4	23.5	27.1	30.3	33.2	68	70	75
1/2 F - A1 - 40	1/2 M - A1 - 40	9.5	9.1	15.7	18.1	22.5	25.6	28.7	31.4	36.3	40.5	44.4	71	75	79
1/2 F - A1 - 50	1/2 M - A1 - 50	9.5	11.1	19.6	22.8	27.6	32.2	36.0	39.5	45.6	51.0	55.8	75	80	83
1/2 F - A1 - 60	1/2 M - A1 - 60	9.5	13.1	23.3	26.9	32.9	38.0	42.5	46.6	53.8	60.2	65.8	76	81	85
3/4 F - A1 - 40	3/4 M - A1 - 40	12.7	7.9	15.7	18.1	22.5	25.6	28.7	31.4	36.3	40.5	44.4	71	72	73
3/4 F - A1 - 50	3/4 M - A1 - 50	12.7	9.5	19.6	22.8	27.6	32.2	36.0	39.5	45.6	51.0	55.8	71	74	76
3/4 F - A1 - 60	3/4 M - A1 - 60	12.7	11.1	23.3	26.9	32.9	38.0	42.5	46.6	53.8	60.2	65.8	75	77	80
3/4 F - A1 - 70	3/4 M - A1 - 70	12.7	12.7	27.6	31.8	38.9	45.0	50.2	55.2	63.6	71.0	78.0	75	80	82
3/4 F - A1 - 80	3/4 M - A1 - 80	12.7	14.3	31.2	36.1	44.2	51.0	56.8	62.5	72.2	80.6	88.4	78	82	85
3/4 F - A1 - 90	3/4 M - A1 - 90	12.7	14.7	35.0	40.5	49.6	57.2	64.0	70.2	81.0	90.5	99.2	82	85	85
3/4 F - A1 - 100	3/4 M - A1 - 100	12.7	15.9	39.0	45.1	55.2	63.7	71.3	78.0	90.2	101	110	84	87	87
3/4 F - A1 - 110	3/4 M - A1 - 110	12.7	17.1	43.0	49.5	60.6	70.0	78.0	85.7	99.0	110	121	84	89	89
3/4 F - A1 - 120	3/4 M - A1 - 120	12.7	18.3	47.0	54.5	66.6	77.0	86.0	94.4	109	122	133	86	89	89



Ø	D	L	D1	L1	H
1/8	16	22	22	28.5	9.5
1/4	20.5	28.5	25.5	33.5	12.5
3/8	24	34	28.5	38	14.5
1/2	33.5	46	35	47.5	19
3/4	39.5	55.5	41	57	22

**CARATTERISTICHE**

- Testina rimovibile.
- Spruzzo a 90° rispetto all'asse d'ingresso.

**APPLICAZIONI**

- Lavaggio e raffreddamento aria e gas.
- Abbattimento polveri.
- Trattamenti superficiali.
- Umidificazioni.
- Ossigenazione acque.
- Raffreddamento tetti.

**CHARACTERISTICS**

- Removable cup.
- 90° spray from the inlet axis.

**APPLICATIONS**

- Washing and cooling of air and gas.
- Dust control.
- Surface treatments.
- Humidifications.
- Water aerating.
- Roof cooling.

**CARACTÉRISTIQUES**

- Tête interchangeable.
- Pulvérisation à 90° par rapport à l'axe d'entrée du liquide.

**APPLICATIONS**

- Lavage et refroidissement d'eau et de gaz.
- Abattement de poussières.
- Traitement de surface.
- Humidification.
- Oxygénation de l'eau.
- Refroidissement de toit.

**TECHNISCHE EIGENSCHAFTEN**

- Düse auswechselbar.
- 90° abgewinkelt.

**ANWENDUNGEN**

- Waschen und Kühlen von Luft und Gas.
- Staubkontrolle (Staubbefeuchtung).
- Oberflächenbehandlung.
- Befeuchtung chemische Verfahrenstechnik.
- Sauerstoffanreicherung.
- Gebäude und Dachkühlung.

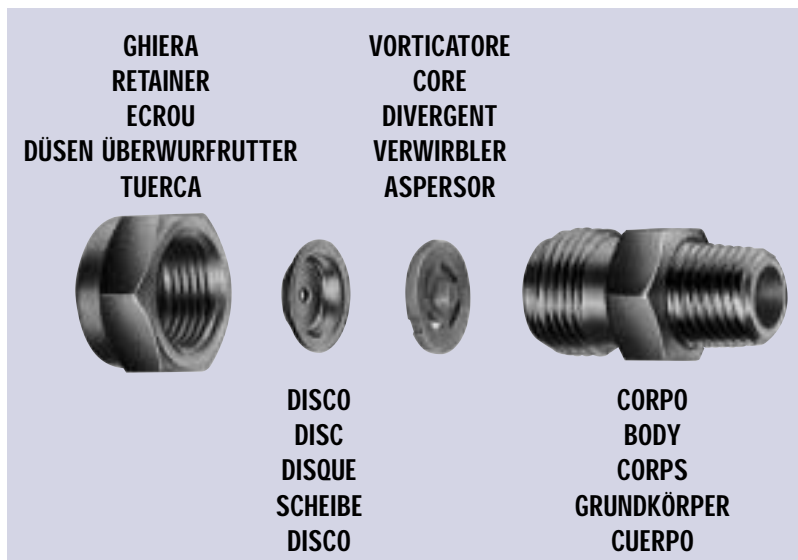
**CARACTERISTICAS**

- Cabeza intercambiable.
- Pulverización a 90° es relación al eje de entrada del liquido.

**APLICACIONES**

- Lavado y enfriamiento de aire y gas.
- Control de polvo.
- Tratamiento de superficies.
- Humidificación.
- Oxigenación de agua.
- Enfriamiento.

TIPO UGELLO NOZZLE TYPE TYPE DE BUSE DÜSENTYP TIPO DE BOQUILLA	D <sub>1</sub> Ø mm	D Ø mm	Pressione - Pressure - Pression - Druck - Presión (bar)										bar		
			0.75	1	1.5	2	2.5	3	4	5	6	0.7	1	1.5	
			Portata - Capacity - Debit - Volumenstrom - Caudal (l/min)										△°	△°	△°
1/8 F - A3 - 0.5	1/8 M - A3 - 05	0.9	1.1	0.19	0.22	0.27	0.32	0.36	0.39	0.45	0.51	0.55	110		
1/8 F - A3 - 1	1/8 M - A3 - 1	1.4	1.7	0.39	0.45	0.55	0.63	0.71	0.78	0.90	1.01	1.10	115		
1/8 F - A3 - 2 - 3	1/8 M - A3 - 2 - 3	2.1	2.7	0.98	1.13	1.38	1.60	1.79	1.96	2.26	2.52	2.76	115		
1/8 F - A3 - 3	1/8 M - A3 - 3	2.4	2.7	1.17	1.35	1.65	1.92	2.14	2.35	2.71	3.03	3.32	115		
1/8 F - A3 - 3 - 5	1/8 M - A3 - 3 - 5	2.4	3.3	1.34	1.55	1.90	2.19	2.45	2.68	3.10	3.46	3.80	115		
1/8 F - A3 - 2 - 10	1/8 M - A3 - 2 - 10	21	4.5	1.60	1.85	2.27	2.62	2.92	3.20	3.70	4.14	4.53	130		
1/8 F - A3 - 5	1/8 M - A3 - 5	3.0	3.3	1.96	2.28	2.76	3.22	3.60	3.95	4.56	5.10	5.58	115		
1/8 F - A3 - 5 - 10	1/8 M - A3 - 5 - 10	3.0	4.5	2.54	2.94	3.60	4.16	4.65	5.09	5.87	6.56	7.20	125		
1/8 F - A3 - 8 - 10	1/8 M - A3 - 8 - 10	3.8	4.5	3.50	4.05	4.96	5.72	6.40	7.00	8.10	9.06	9.90	125		
1/4 F - A3 - 1	1/4 M - A3 - 1	1.4	1.7	0.39	0.45	0.55	0.63	0.71	0.78	0.90	1.01	1.10	110		
1/4 F - A3 - 1 - 5	1/4 M - A3 - 1 - 5	1.4	3.3	0.66	0.76	0.86	1.08	1.21	1.33	1.53	1.71	1.87	110		
1/4 F - A3 - 1 - 10	1/4 M - A3 - 1 - 10	1.4	4.5	0.82	0.95	1.17	1.34	1.50	1.64	1.90	2.12	2.33	140		
1/4 F - A3 - 1 - 15	1/4 M - A3 - 1 - 15	1.4	5.4	0.93	1.10	1.35	1.55	1.75	1.95	2.24	3.00	3.30	105		
1/4 F - A3 - 2 - 5	1/4 M - A3 - 2 - 5	2.1	3.3	1.32	1.50	1.85	2.15	2.42	2.63	3.00	3.41	3.60	120		
1/4 F - A3 - 2 - 10	1/4 M - A3 - 2 - 10	2.1	4.5	1.60	1.85	2.27	2.62	2.92	3.20	3.70	4.14	4.53	140		
1/4 F - A3 - 5	1/4 M - A3 - 5	3.6	3.3	1.96	2.28	2.76	3.22	3.60	3.95	4.56	5.10	5.58	115		
1/4 F - A3 - 5 - 10	1/4 M - A3 - 5 - 10	3.6	4.5	2.54	2.94	3.60	4.16	4.65	5.09	5.87	6.56	7.20	130		
1/4 F - A3 - 5 - 15	1/4 M - A3 - 5 - 15	3.6	5.4	3.02	3.50	4.30	4.94	5.54	6.07	7.00	7.82	8.55	130		
1/4 F - A3 - 8 - 10	1/4 M - A3 - 8 - 10	4.1	4.5	3.50	4.05	4.96	5.72	6.40	7.00	8.10	9.06	9.90	130		
1/4 F - A3 - 10	1/4 M - A3 - 10	4.7	4.5	3.90	4.51	5.52	6.37	7.13	7.80	9.02	10.1	11.0	120		
1/4 F - A3 - 8 - 15	1/4 M - A3 - 8 - 15	4.1	5.4	4.30	4.95	6.05	7.00	7.82	8.60	9.90	11.0	12.1	130		
1/4 F - A3 - 10 - 15	1/4 M - A3 - 10 - 15	4.7	5.4	4.72	5.45	6.67	7.70	8.62	9.42	10.9	12.2	13.4	120		
1/4 F - A3 - 15	1/4 M - A3 - 15	5.8	5.4	5.87	6.78	8.30	9.60	10.7	11.7	13.5	15.1	16.6	100		
3/8 F - A3 - 5 - 10	3/8 M - A3 - 5 - 10	3.5	4.5	2.54	2.94	3.60	4.16	4.65	5.09	5.87	6.56	7.20	130		
3/8 F - A3 - 5 - 15	3/8 M - A3 - 5 - 15	3.5	5.4	3.02	3.50	4.30	4.94	5.54	6.07	7.00	7.82	8.55	140		
3/8 F - A3 - 8 - 10	3/8 M - A3 - 8 - 10	4.5	4.5	3.50	4.05	4.96	5.72	6.40	7.00	8.10	9.06	9.90	125		
3/8 F - A3 - 10	3/8 M - A3 - 10	5.0	4.5	3.90	4.51	5.52	6.37	7.13	7.80	9.02	10.1	11.0	120		
3/8 F - A3 - 8 - 15	3/8 M - A3 - 8 - 15	4.5	5.4	4.30	4.95	6.05	7.00	7.82	8.60	9.90	11.0	12.1	130		
3/8 F - A3 - 10 - 15	3/8 M - A3 - 10 - 15	5.0	5.4	4.72	5.45	6.67	7.70	8.62	9.42	10.9	12.2	13.4	125		
3/8 F - A3 - 8 - 25	3/8 M - A3 - 8 - 25	4.5	7.4	5.07	5.90	7.23	8.36	9.23	10.2	11.8	13.2	14.4	125		
3/8 F - A3 - 10 - 20	3/8 M - A3 - 10 - 20	5.0	5.9	5.45	6.30	7.72	8.91	9.96	10.9	12.6	14.1	15.4	120		
3/8 F - A3 - 15	3/8 M - A3 - 15	6.1	5.4	5.87	6.78	8.30	9.60	10.7	11.7	13.5	15.1	16.6	115		
3/8 F - A3 - 15 - 20	3/8 M - A3 - 15 - 20	6.1	5.9	7.85	7.70	9.41	10.9	12.2	13.3	15.4	17.2	18.9	115		
3/8 F - A3 - 20	3/8 M - A3 - 20	7.1	5.9	7.85	9.05	11.1	12.8	14.3	15.6	18.1	20.2	22.2	105		
3/8 F - A3 - 15 - 30	3/8 M - A3 - 15 - 30	6.1	7.9	8.60	9.94	12.2	14.1	15.7	17.2	19.9	22.2	24.4	120		
3/8 F - A3 - 25	3/8 M - A3 - 25	7.4	7.4	9.86	11.4	13.9	16.1	18.0	19.7	22.8	25.5	28.0	105		
3/8 F - A3 - 25 - 30	3/8 M - A3 - 25 - 30	7.4	7.9	10.8	12.5	15.3	17.7	19.9	21.6	25.0	28.0	30.6	105		
1/2 F - A3 - 50	1/2 M - A3 - 50	9.5	11.1	19.6	22.8	27.6	32.2	36.0	39.5	45.6	51.0	55.8	110		
3/4 F - A3 - 80	3/4 M - A3 - 80	12.7	14.3	31.2	36.1	44.2	51.0	56.8	62.5	72.2	80.6	88.4	115		



### CARATTERISTICHE

- Cono vuoto normale finemente nebulizzato. Spruzzo in asse con l'alimentazione. Indicato per impieghi a basso costo. Vortificatore interno in Delrin. Disco in acciaio indurito per resistere all'abrasione. Assemblabile con tutti gli accessori di pag. 21.

### CHARACTERISTICS

- Standard hollow cone with fine atomization. In line with nozzle inlet spray. Suggested for cheap uses. Internal vane Delrin made. Hardened steel disc to prevent corrosion effects. Assembly with all accessories shown on page 21.

### CARACTERISTIQUES

- Cône creux normal finement nébulisé. Pulvérisation dans l'axe de l'alimentation. Reconnu pour emploi à faible coût. Divergent interne en Delrin. Disque en acier durci pour résister à l'abrasion. Assemblage avec tous les accessoires page 21.

### TECHNISCHE EIGENSCHAFTEN

- Preiswerte fein zerstäubende Hohlkegeldüse, Sprühhichtung radial zur Düsenachse. Verwirbler aus Delrin. Stahlscheibe gehärtet. Zubehör siehe Seite 21.

### CARACTERISTICAS

- Cono hueco normal finemente nebulizado. Pulverización en el eje de la alimentación. Recomendado para aplicaciones de bajo coste. Núcleo interior en Delrin. Disco de acero endurecido para resistir la abrasión. Montaje con todos los accesorios en página 21.

DISCO+VORTICATORE DISC+CORE DISC+DIVERGENT SCHEIBE+VERWIRBLER DISCO+ASPERSOR	PRESSIONE PRESSURE DRUCK CAUDAL (bar)	PORTATA CAPACITY DEBIT VOLUMENSTROM CAUDAL l/min	DISCO+VORTICATORE DISC+CORE DISC+DIVERGENT SCHEIBE+VERWIRBLER DISCO+ASPERSOR	PRESSIONE PRESSURE DRUCK CAUDAL (bar)	PORTATA CAPACITY DEBIT VOLUMENSTROM CAUDAL l/min	DISCO+VORTICATORE DISC+CORE DISC+DIVERGENT SCHEIBE+VERWIRBLER DISCO+ASPERSOR	PRESSIONE PRESSURE DRUCK CAUDAL (bar)	PORTATA CAPACITY DEBIT VOLUMENSTROM CAUDAL l/min
Ø 0.9-13	3	0.38	Ø 1.2-45	3	1.06	Ø 2.4-45	3	3.2
	5	0.49		5	1.36		5	4.12
	7	0.58		7	1.61		7	4.84
	10	0.69		10	1.93		10	5.84
	15	0.84		15	2.36		15	7.25
	20	0.98		20	2.73		20	8.26
25	1.09	25	3.06	25	9.24			
Ø 0.9-23	3	0.44	Ø 1.6-25	3	1.18	Ø 2.6-45	3	3.6
	5	0.56		5	1.53		5	4.63
	7	0.67		7	1.80		7	5.49
	10	0.80		10	2.15		10	6.57
	15	0.98		15	2.63		15	8.05
	20	1.1		20	3.04		20	9.30
25	1.27	25	3.40	25	10.40			
Ø 1.2-23	3	0.62	Ø 1.6-45	3	1.54	Ø 3.2-45	3	5.58
	5	0.80		5	1.99		5	7.19
	7	0.94		7	2.35		7	8.51
	10	1.13		10	2.81		10	10.19
	15	1.38		15	3.44		15	12.47
	20	1.60		20	3.98		20	14.41
25	1.78	25	4.45	25	16.12			
Ø 1-25	3	0.67	Ø 2-45	3	2.40	Ø 3.9-45	3	5.4
	5	0.86		5	3.01		5	7.0
	7	1.02		7	3.66		7	8.2
	10	1.22		10	4.38		10	9.8
	15	1.49		15	5.37		15	12.9
	20	1.72		20	6.20		20	13.9
25	1.93	25	6.93	25	15.6			
Ø 1.2-25	3	0.89	Ø 2.6-25	3	2.48	Ø 4.6-45	3	5.8
	5	1.1		5	3.19		5	7.5
	7	1.31		7	3.78		7	8.9
	10	1.56		10	4.52		10	10.6
	15	1.92		15	5.54		15	13.0
	20	2.21		20	6.40		20	15.0
25	2.48	25	7.16	25	16.8			